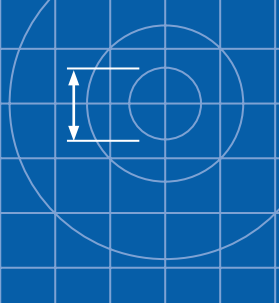


Manhole Step

Technical Installation Guide

February 2025



Product attributes

- High strength & proven durability
- Easy bolt-in installation
- Watertight connection - no leaks
- Stainless Steel and plastic encapsulated (non-slip) Step options for wastewater
- Galvanised Step options for stormwater

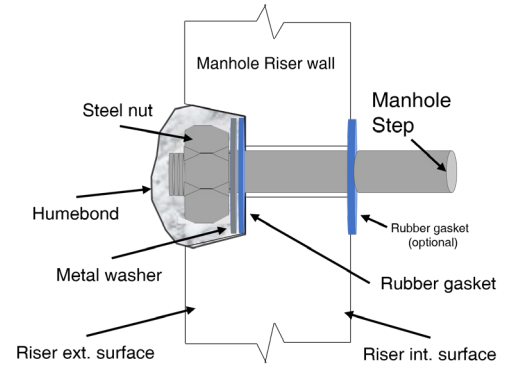


Fig. 1 - Humes Manhole Step (stainless steel) with rubber gasket, steel washer and nuts.

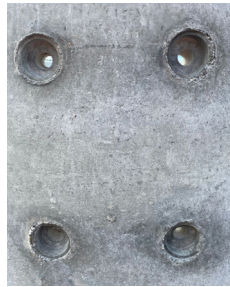


Fig. 2 - Manhole Step holes, external view.

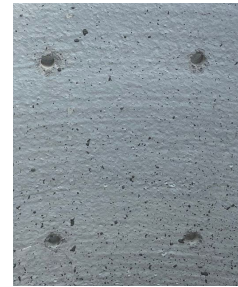
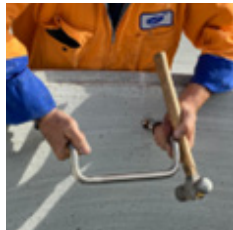


Fig. 3 - Manhole Step holes, internal view.

Installation procedure

1. Ensure Manhole Step and step holes are clean and free of debris
2. Position the Step from the inside of the riser. Ensure the Step is installed curving down. Position each Step leg to align with holes.
3. Apply even force on both Step legs and push into the holes as far as possible by hand.



4. GENTLY tap on the alternate leg of the Step to ensure the Step inserts evenly. DO NOT hammer the Step in the centre, as this can cause rebound.



5. Place the rubber gaskets over the threaded Step ends from the outside wall of the Riser.



0800 502 112
www.humes.co.nz



Manhole Step - Technical Installation Guide

Installation procedure continued...

6. Place the steel washer on top of the rubber gasket.



7. Screw the nut onto the threaded Step end and snug-tight the nut with a socket wrench.



8. Repeat for other side and check Step is level and secure.

9. Follow Humebond (two part epoxy mortar) mixing and application instructions.



10. Use Humebond to cover Step end and nut completely (min. 10mm coverage).



11. Ensure Humebond is pressed firmly around Step end and nut to eliminate air voids for a secure and durable seal.

Note: see Humebond product information for curing times.



For the plastic encapsulated Steps follow the above, ensuring Step is inserted into the holes with the anti-slip tread & boot stops facing upwards.



Further technical details or advice freephone
0800 502 112 or visit humes.co.nz

Buyers and users of the products described in this brochure must make their own assessment of the suitability and appropriateness of the products for their particular use and the conditions in which they will be used. All queries regarding product suitability, purpose or installation should be directed to the nearest Humes Sales Centre for service and assistance. Fletcher Concrete and Infrastructure Limited 2025.

HUM-TECH-20250224

