



AVK GATE VALVE DN700 - DN1200, PN16 WITH BYPASS

54/5X

Metal seated gate valve designed according to BS EN 1074 Parts 1 & 2
Face to face dimensions to AS 2638.1
Flanges cast to BS EN 1092-2, PN16 and drilled to AS 4087 B5
Distance piece mounting flange to ISO 5210

Use:

- For water, sewage and neutral liquid applications
 - Valve designed for use up to 70°C
 - FBE coating to AS 4158 (DN700-1000)
 - 2pack epoxy to 500 microns for DN1200
- Note: Valve stuffing box to be accessible in below ground installation

Tests:

- Hydraulic test in accordance with AS 2638.1
- Valve Seat Test - both directions:
 - 17.6 bar
- Body test:
 - 24 bar
- Coating tests:
 - Holiday test as per AS 3894.1 at 5V per micron

Optional Extras:

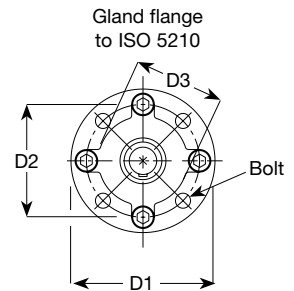
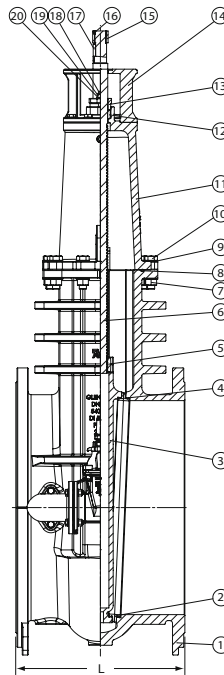
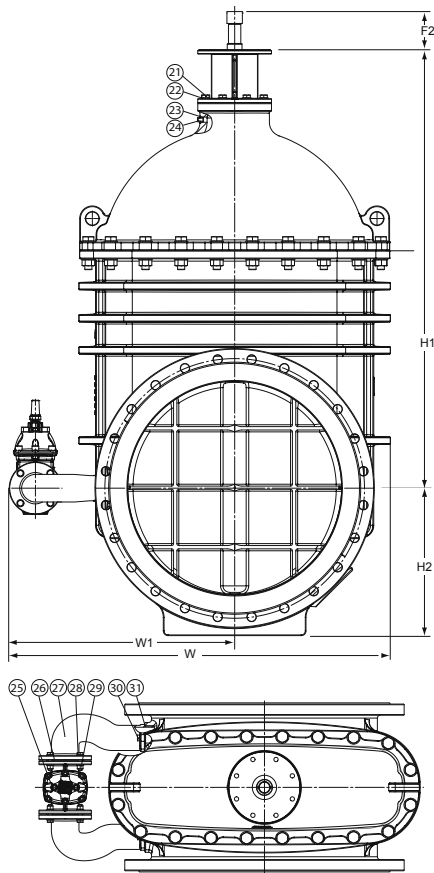
- Extension spindle
- Gearbox
- Electric actuators

Bypass valve:

- Resilient seated gate valve



Expect... **AVK**



	D1 mm	D2 mm	D3 mm	Bolt	No. of Bolts
F14	175	140	100	M16	4
F16	210	165	130	M20	4
F25	300	254	200	M16	8
F30	350	298	230	M20	8
F35	415	356	260	M30	8

Component list

1. Body	Ductile Iron, GJS-500-7 to EN 1563, (BS 2789 grade 500-7)	15. Thrust nut	Stainless Steel 316 (Grade A4)
2. Face ring	Gunmetal to EN 1982 CC491K (BS 1400)	16. Screw	Stainless Steel 316 (Grade A4)
3. Wedge	Ductile Iron, GJS-500-7 to EN 1563, (BS 2789 grade 500-7)	17. Key	Stainless Steel 316 (Grade A4)
4. Seat ring	Gunmetal to EN 1982 CC491K (BS 1400)	18. Stud bolt	Stainless steel 316 (Grade A4)
5. Stem nut	Gunmetal to EN 1982 CC491K (BS 1400)	19. Nut	Stainless Steel 316 (Grade A4)
6. Stem	Stainless Steel 431	20. Washer	Stainless Steel 316 (Grade A4)
7. Nut	Stainless Steel 316 (Grade A4)	21. Bolt	Stainless Steel 316 (Grade A4)
8. O-cord	EPDM/NBR	22. Washer	Stainless Steel 316 (Grade A4)
9. Washer	Stainless Steel 316 (Grade A4)	23. Gasket	EPDM
10. Bolt	Stainless Steel 316 (Grade A4)	24. Plug	Gunmetal to EN 1982 CC491K (BS 1400)
11. Bonnet	Ductile Iron, GJS-500-7 to EN 1563, (BS 2789 grade 500-7)	25. Bypass gate valve	Ductile Iron, GJS-500-7 to EN 1563, (BS 2789 grade 500-7)
12. Packing	PTFE impregnated cord	26. O-ring	EPDM/NBR
13. Gland	Ductile Iron, GJS-500-7 to EN 1563, (BS 2789 grade 500-7)	27. Bypass elbow	Ductile Iron, GJS-500-7 to EN 1563, (BS 2789 grade 500-7)
14. Distance piece	Ductile Iron, GJS-500-7 to EN 1563, (BS 2789 grade 500-7)	28. Bolt	Stainless Steel 316 (Grade A4)
		29. Nut	Stainless Steel 316 (Grade A4)
		30. Bolt	Stainless Steel 316 (Grade A4)
		31. O-ring	EPDM/NBR

Components can be substituted with equivalent or higher class materials.

Reference nos. and dimensions

AVK ref. nos. CC	AVK ref. nos ACC	DN mm	L mm	H1 mm	H2 mm	W mm	W1 mm	F2 mm	ISO flange	Bypass DN	Theoretical weight kg
54070057584Y502	54070058584Y502	700	610	1497	455	1359	834	129	Y	100	1453
54075057584Y502	54075058584Y502	750	950	1689	540	1677	955	144	Y	150	1986
54080057584Y506	54080058584Y506	750*	660	1689	552	1488	908	129	Y	100	1802
54080057584Y502	54080058584Y502	800	660	1689	552	1488	908	129	Y	100	1802
54090057584Y502	54090058584Y502	900	711	1844	620	1603	948	131	Y	100	2354
54100057584Y502	54100058584Y502	1000	813	2007	648	1707	1005	136	Y	100	3083
54120057584Y504	54120058584Y504	1200**	914	2427	773	2036	1180	136	Y	150	4730

* DN800 drilled to DN750

** Coating two pack epoxy 500 microns

Y=ISO flange: 1=F14 2=F16 3=F25 4=F30 5=F35